

Oregon  
Agricultural  
Education  
Foundation

PARTNERS WITH THE  
OREGON FARM BUREAU

# Oregon Farm Bureau Memorial Scholarship 2023–2024 Scholarship Recipients

"We appreciate the contributions of our donors and friends who make it possible for these young people to pursue a career in the agriculture industry. Your gifts help to keep Oregon agriculture viable."

## 2023–2024 Oregon Farm Bureau Memorial Scholarship Sponsors

Norman L. Stauffer Memorial Endowment, John Rossner Memorial Endowment, Anne Marie Moss Endowment, Mike & Jeanne Seppa, David & Ellen Vanasche, Tillamook County Farm Bureau, Marion County Farm Bureau, Tillamook County Creamery Association, Douglas County Farm Bureau, Yamhill County Farm Bureau, Multnomah County Farm Bureau, Cow Creek Band of Umpqua Tribe of Indians, Wilco, Dave & Anastacia Dillon, John & Eileen Williams, Hood River County Farm Bureau, Polk County Farm Bureau, OFBF President's Club, Oregon Farm Bureau Federation, Wigrich Farms, Jerry Domes, Setniker Trading Co. LLC, and AgWest Farm Credit.

### \$3,000 Scholarship in Memory of Anne Marie Moss:



**Tegan Macy**  
Jefferson County  
Crop Production  
University of Idaho  
Sponsors: Friends and Family of Anne Marie Moss

### \$2,500 Scholarship in Memory of Gary Johnson:



**Cydney Stables**  
Yamhill County  
Agribusiness  
Graceland University  
Sponsor: Yamhill County Farm Bureau

### \$2,500 Scholarships from the Mike & Jeanne Seppa Scholarship for Agricultural Sciences:



**Mikell Lowry**  
Klamath County  
General Agriculture  
Oregon State University  
Sponsor: Mike & Jeanne Seppa



**Jack Mornarich**  
Douglas County  
Pre-Veterinary Studies  
Oregon State University  
Sponsor: Mike & Jeanne Seppa

### \$2,500 Scholarship in Memory of John Rossner:



**Dru Boyle**  
Jefferson County  
Agricultural Business & Management  
Oregon State University  
Sponsor: John Rossner Endowment

### \$2,000 Scholarships in Memory of Norman L. Stauffer:



**Leah Twede**  
Marion County  
General Agriculture  
Corban University  
Sponsor: Norman Stauffer Memorial Endowment



**Aubrina Melville**  
Wallowa County  
Agricultural Business & Management  
South Dakota State University  
Sponsor: Norman Stauffer Memorial Endowment



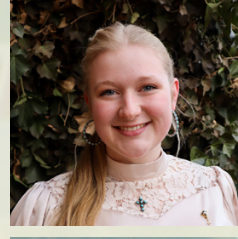
**Jessica Sperber**  
Deschutes County  
Animal Science  
Texas A & M University  
Sponsor: Norman Stauffer Memorial Endowment



**Moriah Michaels**  
Douglas County  
Agricultural Economics  
University of Idaho  
Sponsor: Norman Stauffer Memorial Endowment



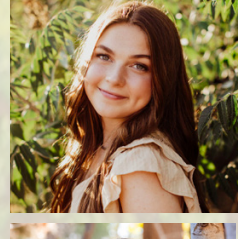
**Tayleur Baker**  
Harney County  
General Agriculture  
Oregon State University  
Sponsor: Norman Stauffer Memorial Endowment



**Hannah Glaser**  
Linn County  
Agricultural Business & Management  
University of Idaho  
Sponsor: Norman Stauffer Memorial Endowment



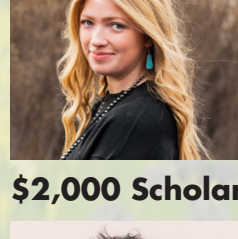
**Kailei Ouellette**  
Deschutes County  
Veterinary Medicine  
Oregon State University  
Sponsor: Norman Stauffer Memorial Endowment



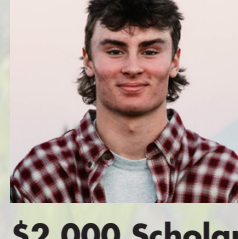
**Madison Orem**  
Morrow County  
Animal Science  
University of Idaho  
Sponsor: Norman Stauffer Memorial Endowment



**Madeline Lowry**  
Klamath County  
Agricultural Business & Management  
Oregon State University  
Sponsor: Norman Stauffer Memorial Endowment



**Rylee Demianew**  
Umatilla County  
Agriculture  
Oregon State University  
Sponsor: Norman Stauffer Memorial Endowment



**Cole Gallant**  
Clackamas County  
Agricultural Business & Management  
Oregon State University  
Sponsor: John Rossner Endowment



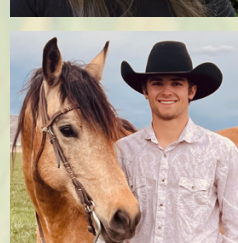
**Maclane Melville**  
Wallowa County  
Agricultural Business & Management  
Treasure Valley Community College  
Sponsors: Yamhill County Farm Bureau and John & Eileen Williams



**Sydney Dodge**  
Umatilla County  
Agricultural Business & Management  
Blue Mountain Community College  
Sponsor: John & Eileen Williams



**Hanna VanDeWalle**  
Yamhill County  
Agriculture  
Oregon State University  
Sponsor: David & Ellen Vanasche



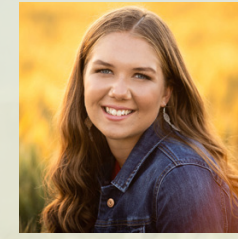
**Conley Martin**  
Malheur County  
Animal Science  
University of Idaho  
Sponsor: David & Ellen Vanasche

### \$2,000 Scholarship Recipient:



**Henry Schmitz**  
Marion County  
Agricultural Mechanics  
Oregon State University  
Sponsors: Marion County Farm Bureau and Dave & Anastacia Dillon

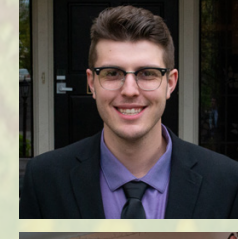
### \$1,500 Scholarship Recipients:



**Kaylie Melville**  
Wallowa County  
Secondary Education  
Corban University  
Sponsor: Multnomah County Farm Bureau



**Abbigayle Bailey**  
Multnomah County  
Biology  
Multnomah University  
Sponsor: Multnomah County Farm Bureau



**Colby Fairbairn**  
Douglas County  
Agricultural Economics  
Oregon State University  
Sponsor: OFBF Members in Honor of Dave Dillon

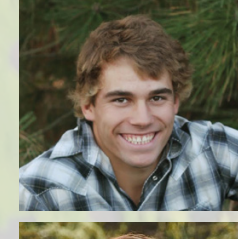


**Josie Maddux**  
Douglas County  
Respiratory Therapy  
Oregon Institute of Technology  
Sponsors: Douglas County Farm Bureau & Cow Creek Band of Umpqua Tribe of Indians

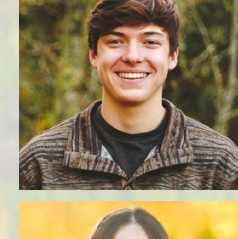
### \$1,000 Scholarship Recipients:



**Charles Harris**  
Washington County  
Soil Science & Agronomy  
Oregon State University  
Sponsor: Tillamook County Farm Bureau



**Emmett Henderson**  
Lane County  
Agronomy & Crop Science  
University of Idaho  
Sponsor: Tillamook County Creamery Association



**Clay Mornarich**  
Douglas County  
Pre-Veterinary Studies  
University of Idaho  
Sponsor: AgWest Farm Credit



**Rachel Cahill**  
Lake County  
Agricultural Communications  
University of Idaho  
Sponsor: Wilco



**Hailey Stuben**  
Hood River County  
Environmental Studies  
Claremont McKenna College  
Sponsor: Hood River County Farm Bureau



**Norah Steed**  
Polk County  
Forestry  
Oregon State University  
Sponsor: Polk County Farm Bureau  
in Memory of Jim Buckovic

Contributions of \$100 –\$499 were received from many scholarship supporters, including Columbia County Farm Bureau, Sharon Waterman, Ronald Alderson, Dean & Andrena Freeborn, David & Freynie Gienger, Michel Calef, Ruddenklau Farms, Troy & Kathy Hadley, Scharf Farms, Inc., and generous Oregon Farm Bureau members who contributed with their Membership dues. **Thanks to all of our Sponsors, we were able to award 31 deserving recipients a grand total of \$57,000!**

The Oregon Agricultural Education Foundation, through its Oregon Farm Bureau Memorial Scholarship Project, offers scholarships to individuals preparing to continue their education through a junior college, or a four-year college or university, with plans to study in an agricultural related major. Children and grandchildren of voting members of Oregon Farm Bureau are eligible regardless of their major. Contributions are received throughout the year in support of the OFB Memorial Scholarship Project.

The Foundation is a 501 (c) (3) Oregon non-profit organization. Mail your contributions to: Oregon Agricultural Education Foundation Scholarships, 1320 Capitol St. NE, Suite 200, Salem, OR 97301. For information, contact Holly Michaels, OFBF Memorial Scholarship Coordinator, at [scholarship@oregonfb.org](mailto:scholarship@oregonfb.org).

Copyright © 2023, Oregon Agricultural Education Foundation. All materials are copyrighted. No material may be reproduced or reused without explicit permission from Oregon Agricultural Education Foundation.